



Navicat
Data Modeler

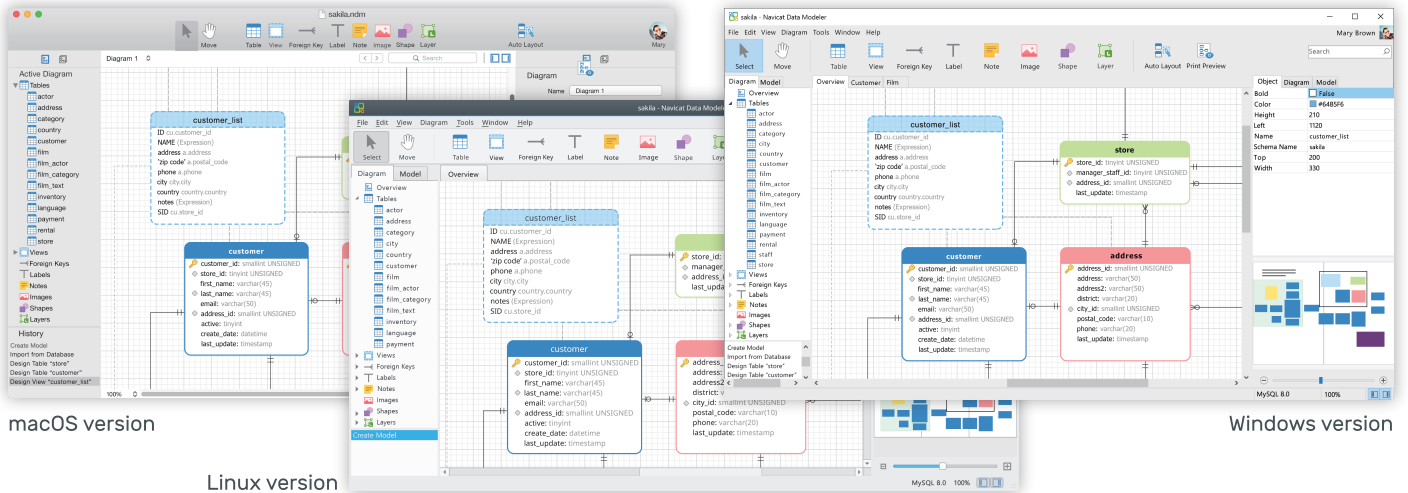
Navicat Data Modeler is a powerful and cost-effective database design tool which helps you build high-quality conceptual, logical and physical data models. It allows you to visually design database structures, perform reverse/forward engineering processes, import models from ODBC data sources, generate complex SQL/DDDL, print models to files, and much more.

Simplify the task of creating complex entity relationship models and generate the script SQL with a simple click. Navicat Data Modeler supports various database systems, including MySQL, MariaDB, Oracle, SQL Server, PostgreSQL, and SQLite.

Feature Overview

Database Objects

Create, modify, and design your models using professional object designers, available for Tables and Views. Without the need to write complex SQL to create and edit objects, you'll know exactly what you are working on. Also, Navicat Data Modeler supports three standard notations: Crow's Foot, IDEF1x and UML. Using our feature-rich, simple, and user-friendly drawing tools, you can develop a complete data model with just a few clicks.



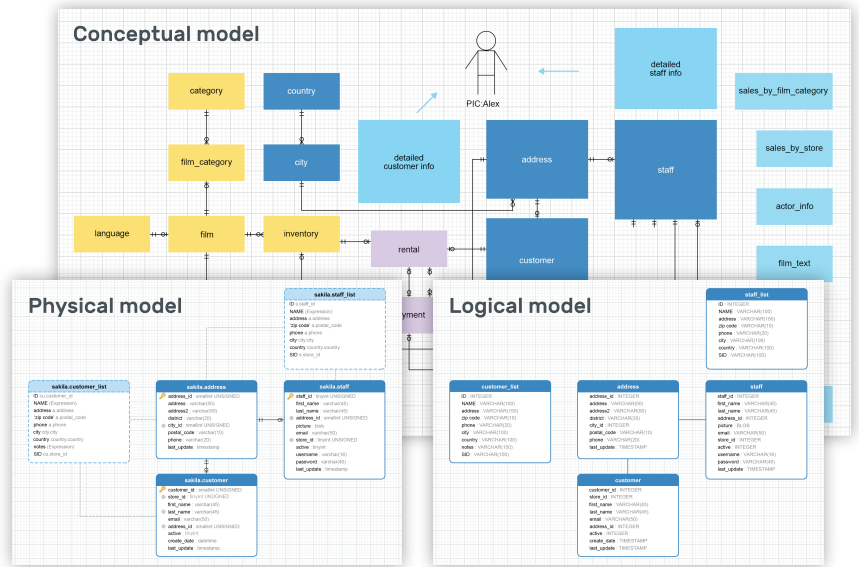
Standard Designing Tools

Add vertices, layers, images, shapes, and notes/labels, align/distribute objects, unlimited undo/redo capacity, auto layout, search filter, and more.



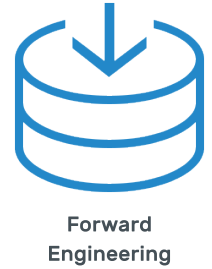
Model Types

Navicat Data Modeler enables you to build high-quality conceptual, logical and physical data models for a wide variety of audiences. Using the Model Conversion feature, you can convert a conceptual business-level model into a logical relational database model and then into a physical database implementation. From sketching a big picture of your system design to viewing relationships and working with attributes and columns from linked entities, tables and views. You can easily deploy accurate changes to database structures and build organized and more effective database systems.



Reverse Engineering

Reverse Engineering is one of the key features of Navicat Data Modeler. Load existing database structures and create new ER diagrams. Visualize database models so you can see how elements such as attributes, relationships, indexes, uniques, comments, and other objects relate to each other without showing actual data. Navicat Data Modeler supports different databases: Direct connection, ODBC, MySQL, MariaDB, Oracle, SQL Server, PostgreSQL, and SQLite.

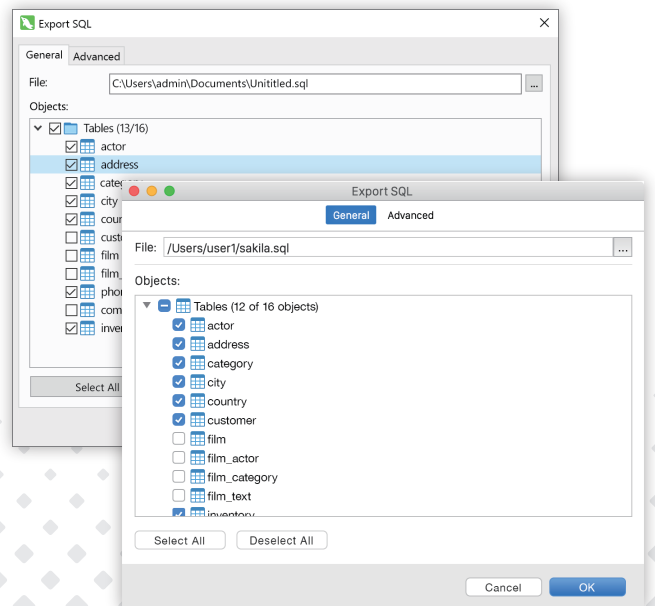
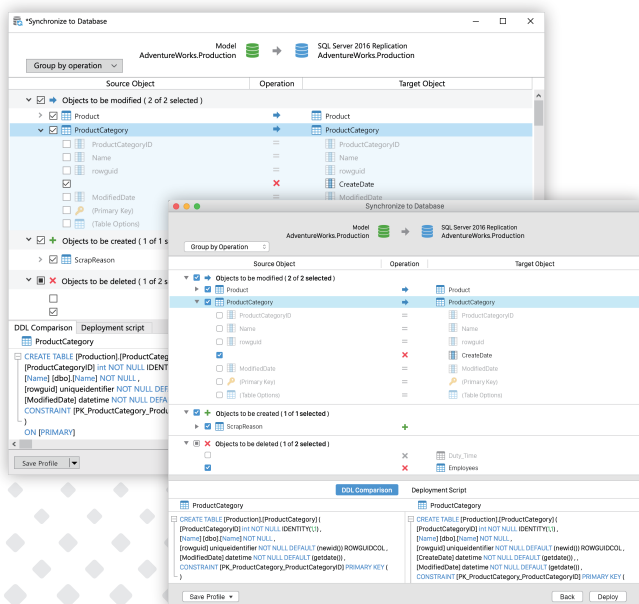


Comparison and Synchronization

The Synchronize to Database function will give you a full picture of all database differences. Once your databases are compared, you can view the differences and generate a synchronization script to update the destination database to make it identical to your model. Flexible settings enable you to set up a custom key for comparison and synchronization.

SQL Code Generation

Navicat Data Modeler is not only a tool for creating ER diagrams and designing your databases. Its Export SQL feature also gives you full control over the final SQL script and allows you to generate individual parts of your model, referential integrity rules, comments, character sets, etc., potentially saving you hundreds of hours of work.



Navicat Cloud

Navicat Data Modeler is fully integrated with Navicat Cloud. Sync your model files and virtual groups to the cloud for a real-time access at anytime and anywhere. With Navicat Cloud, you can leverage every minute of your day to maximize your productivity.



Navicat Cloud

Feature Matrix

	Essentials	Enterprise
Model/GUI Workspace		
Model Conversion - Conceptual, Logical and Physical	✓	✓
Build model with multiple schemas	✓	✓
Multiple diagram editing	✓	✓
Dark mode	✓	✓
Full screen mode	✓	✓
Diagram Editor		
Crow's Foot, IDEF1x and UML notations	✓	✓
Create/edit/drop database objects and relations	✓	✓
Auto layout		✓
Zoom in/Zoom out	✓	✓
Aligning and distributing database objects	✓	✓
Add vertices, layers, images, notes, labels and shapes	✓	✓
Navicat Cloud		
Collaboration: create projects, add members	✓	✓
Synchronize connections and virtual groups		✓
Synchronize models	✓	✓
Reverse/Forward Engineering		
Secure connection: SSH/HTTP/SSL		✓
PAM and GSSAPI authentication		✓
Import from local/remote MySQL, MariaDB, Oracle, PostgreSQL, and SQLite		✓
Import from local/remote SQL Server		✓
Import from cloud database: Amazon RDS, Amazon Aurora, Amazon Redshift, Microsoft Azure, Oracle Cloud, Google Cloud, Alibaba Cloud, Tencent Cloud, Huawei Cloud		✓
Import tables from ODBC		✓
Import connections from Navicat family		✓
Comparing and synchronizing database/model		✓
Generating complex SQL/DDDL		✓
Other Useful Features		
Search filter	✓	✓
Print database diagrams to PDF and graphic files	✓	✓

**FREE
TRIAL**

We offer a 14-day fully functional free trial of Navicat Data Modeler to download, please visit : <https://www.navicat.com/products/navicat-data-modeler>

Navicat Data Modeler Overview :
<https://www.navicat.com/products/navicat-data-modeler>

More than 40% of the Fortune 500 rely on Navicat every day.

Navicat is the choice of over 3 million database users all around the world. Over 170,000 registered customers across 7 continents and 138 countries have chosen our products.



" I really like the new GUI in Navicat. The Speed of Navicat is very fast and its Interface is very nice. Stability has also been strengthened. "



Karsten Torp Rasmussen
Senior Consultant, KPMG Advisory

Awards



System Requirements



PremiumSoft™

PremiumSoft CyberTech Ltd.

PremiumSoft was founded in 1999 and has developed a wide variety of applications for Windows, macOS, Linux and iOS. Our talented team of software engineers is known for producing top-quality software and we maintain a stellar reputation for providing world-class customer support.

Address : Unit 1605-1607, Level 16, Tower 1, Grand Century Place,
Mongkok, Kowloon, Hong Kong

Phone : +852 - 2498 3422

Office Hour : 9:30 - 18:30 (GMT + 8)

Email: sales@navicat.com

Website: www.navicat.com